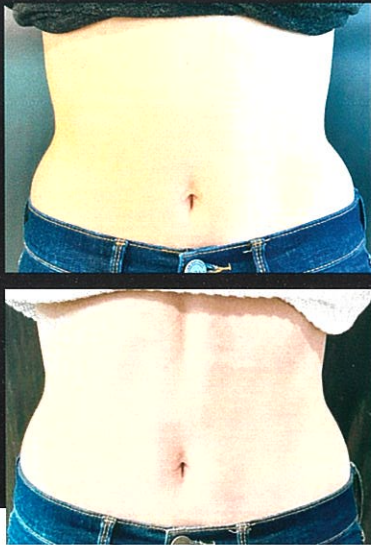
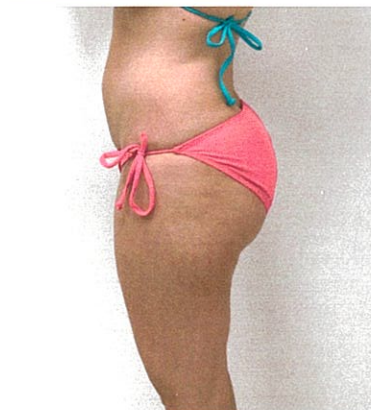


## Results



3 Sessions. Courtesy of Cartessa Aesthetics



4 Sessions. Courtesy of AIREM Beauty Rituals

PHYSIQ is designed and built in Florence, Italy  
by a global leader in aesthetic technology,

**DEKA**  
Innate Ability

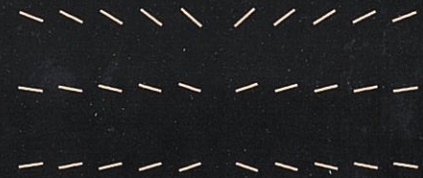
Distributed exclusively in the US by

 **CARTESSA**

[www.cartessaesthetics.com](http://www.cartessaesthetics.com)

# PHYSIQ

## Body Treatment

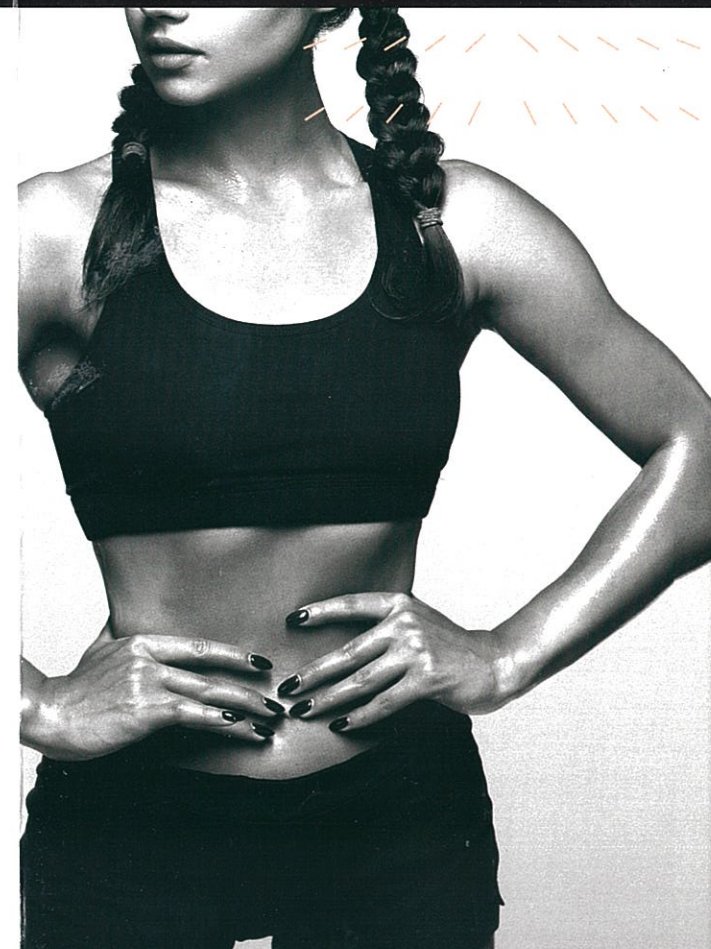


Exclusive STEP technology  
targets muscle and tissue

Treat multiple areas at once

Comfortable, 30 minute  
treatments

No Downtime



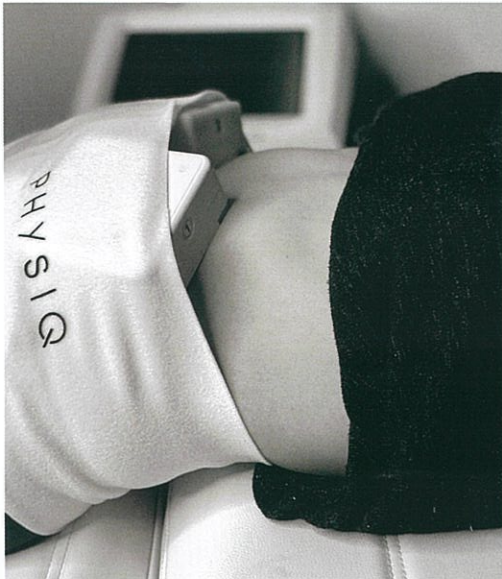
# PHYSIQ

PHYSIQ is the first body system that uses STEP technology (Sequential Thermal & Electrical Pulse) that delivers heat to tissue and electrical muscle stimulation (EMS) to stimulate muscle to target stubborn areas that regular diet and exercise have a difficult time addressing.

By delivering two energies from each of its four applicators, PHYSIQ is designed to maximize your results while minimizing treatment time and discomfort. Utilize two, three or four applicators to target hard to reach, small and larger areas.

## How does PHYSIQ work?

PHYSIQ targets tissues and muscle with its unique STEP technology. STEP programs are customized sequences of timed phases of deep heat and muscle stimulation. The deep heat phase from PHYSIQ's super luminescent diode matrix (SDM) targets tissue while electrical muscle stimulation (EMS) creates muscle contractions to re-educate the muscle in the targeted area.



## What should I expect before, during and after my treatment?

**BEFORE** your PHYSIQ treatment, if necessary, you will want to shave the targeted area.

PHYSIQ has four independent applicators that can deliver both heat and EMS. Your provider will place up to four applicators spaced along the desired area and secure them with a PHYSIQ band. There is no messy gel required.

**DURING** your treatment you may feel warmth at the applicator site and you will feel muscle contractions during the EMS phases. Should you feel discomfort, you may use the patient control button which adjusts the energy modulation without impacting the effectiveness of the treatment.

**AFTER** your treatment, it is important to massage the area with the PHYSIQ body lotion that was designed to complement your body treatment. One bottle of the PHYSIQ body lotion will allow you to continue this massage, twice daily, between treatments.

The area(s) may feel warm for a few hours post treatment.

“ After my PHYSIQ session, my muscles feel like they've had a workout and I am thrilled with the results I have seen after a few treatments. ”

- Brittany, Age 28

www.physiqbody.com  
@physiqbody

## How long is a single treatment?

The length of treatment will depend on the area being treated but on average, treatments are thirty minutes.

## Can I treat more than one area in a single session?

PHYSIQ has four applicators which may be used in sets of two on multiple areas in one single session. A maximum of three areas may be treated in one day.

## How many treatments will I need?

The recommendation is 5 sessions with each session spaced one week apart. EMS may be used alone to maintain results after full STEP sessions. However, everyone is different so it is important for you to talk to your provider about those areas you'd like to target and your goals.

## What makes PHYSIQ a virtually pain-free treatment?

First, the deep penetration of heat and cooling at the applicator's surface allows the skin's temperature to rise only minimally. Next, the cycling between heat and EMS with STEP ensures the optimal temperature is reached and maintained throughout the treatment. Lastly, patients have a control button to make any adjustments for comfort without impacting the efficacy of the session.

